

HELI
LIFTING THE FUTURE

**2.0 ton
CBD20
AC Electric Pallet Trucks**

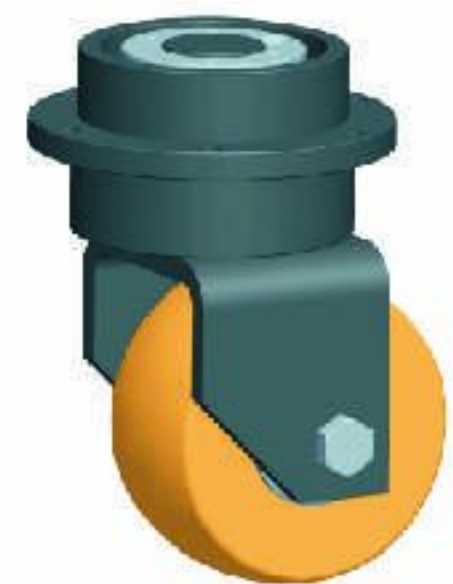


TOP1 FORKLIFT MANUFACTURING AND SALE
IN CHINA CONTINUOUSLY FOR 20 YEARS

- **Multi-function instrument**
It includes the hour meter, and battery discharge indicator (BDI) to inform the operator to recharge the battery in time.
- **Operator handle**
Ergonomic designed handle is easy and comfort controlled.
- **Electric power steering system (EPS)**
The steering system is not connected with the driving system to prevent any disadvantage that they move together, when the handle turning the driving unit no longer needs turning accordingly. EPS is more effective and precise, its module design and malfunction display provides fast and simple self diagnosis function.
- **AC drive motor and Curtis AC controller**
AC drive motor offers excellent power performance even on full load, Curtis controller has advanced cooling system and compact and sealed design.
- **Sealed stabilizer wheel**
Special design sealed stabilizer wheel not only eliminates the fiber material intertwined, but also ensure the stability during driving and steering, effectively reduces the sway and side turn over.

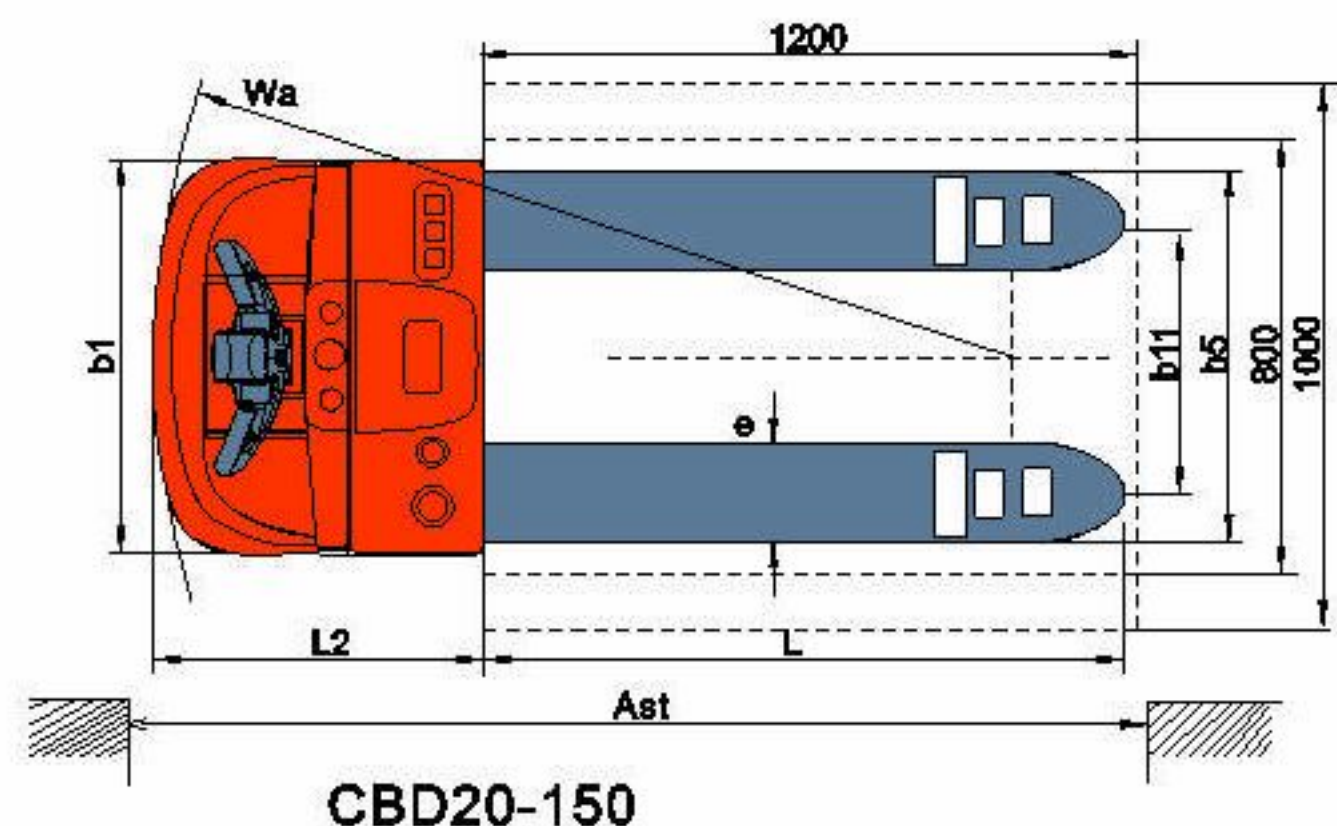
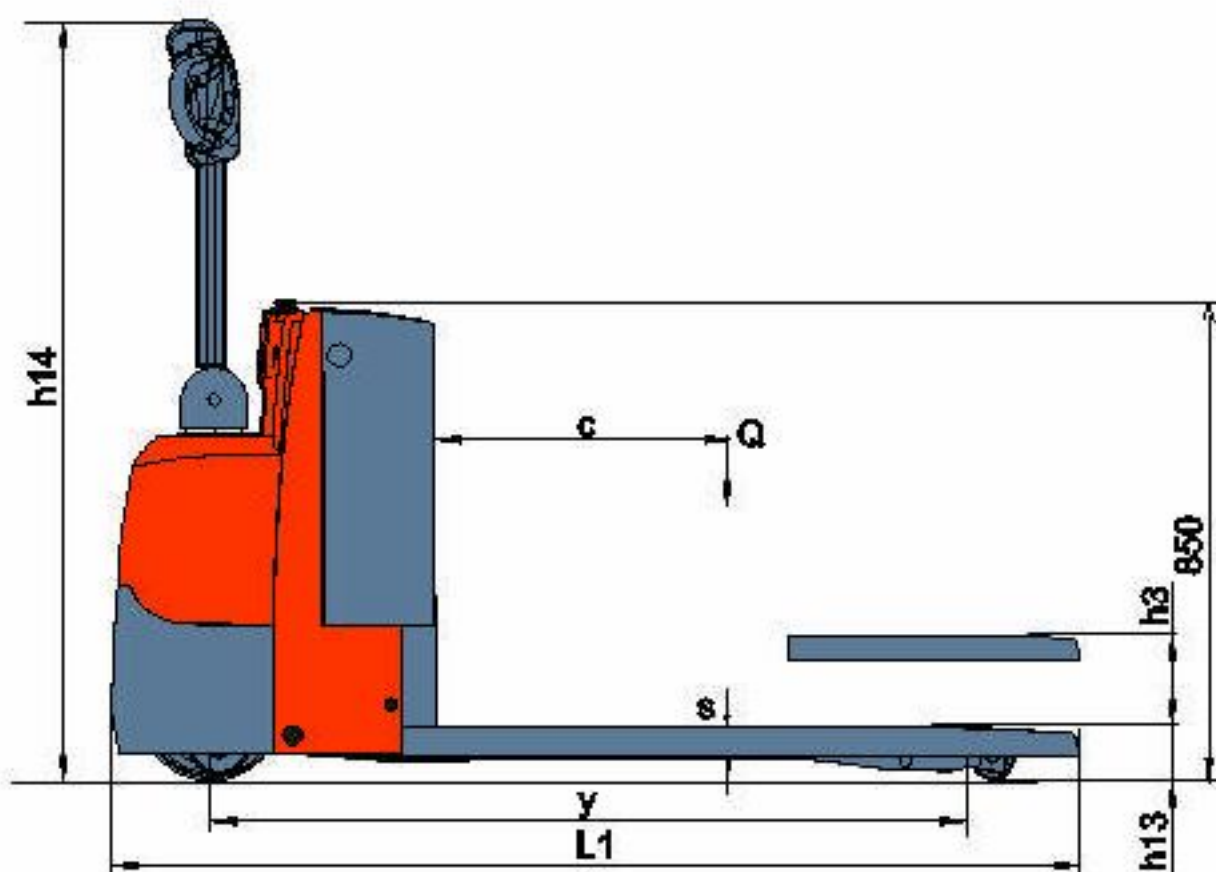
CBD20-460 has the following special characteristics:

- **Drive wheel friction automatic compensation system**
Central pressure boost cylinder linked with the hydraulic system, the cylinder pressure is increased accordingly as the load increasing, it add more pressure to the driving wheel to ensure the best friction on the ground, this design solves the problem in the industry that the driving wheel is easy skid with full load.
- **Easy change battery side extraction**
The battery can be pulled out from side makes the battery changing is convenient and quickly.





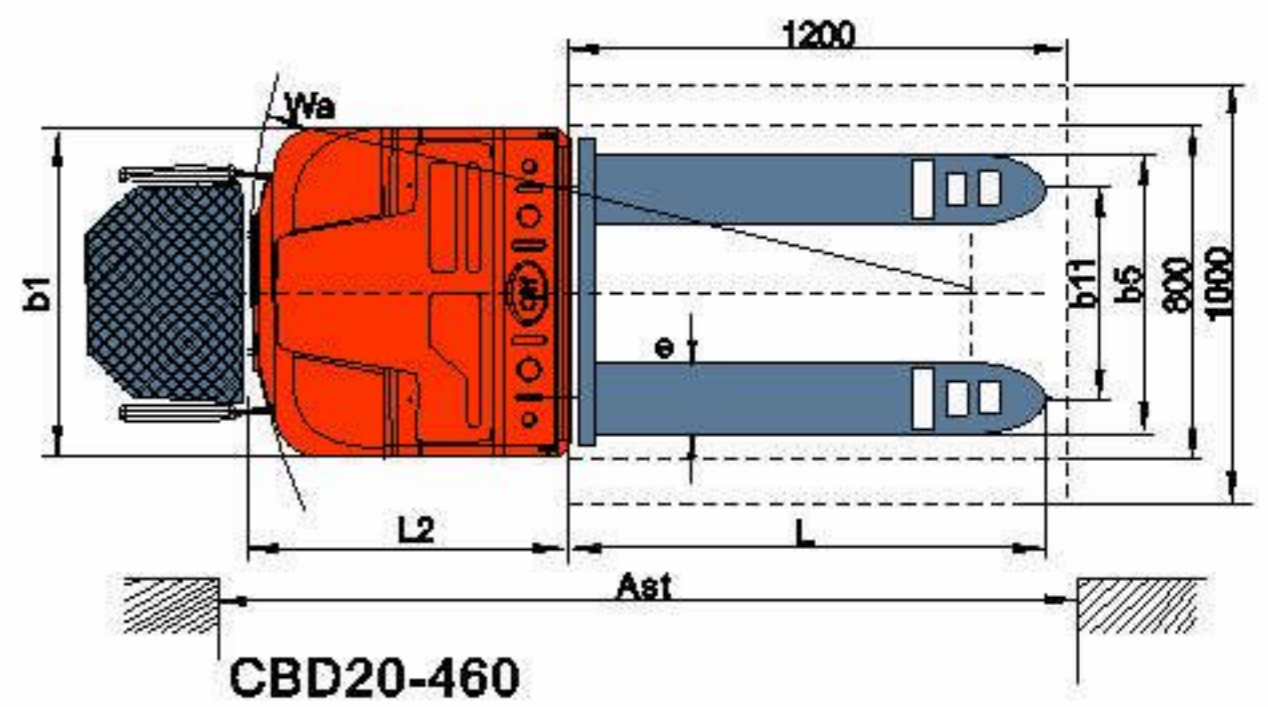
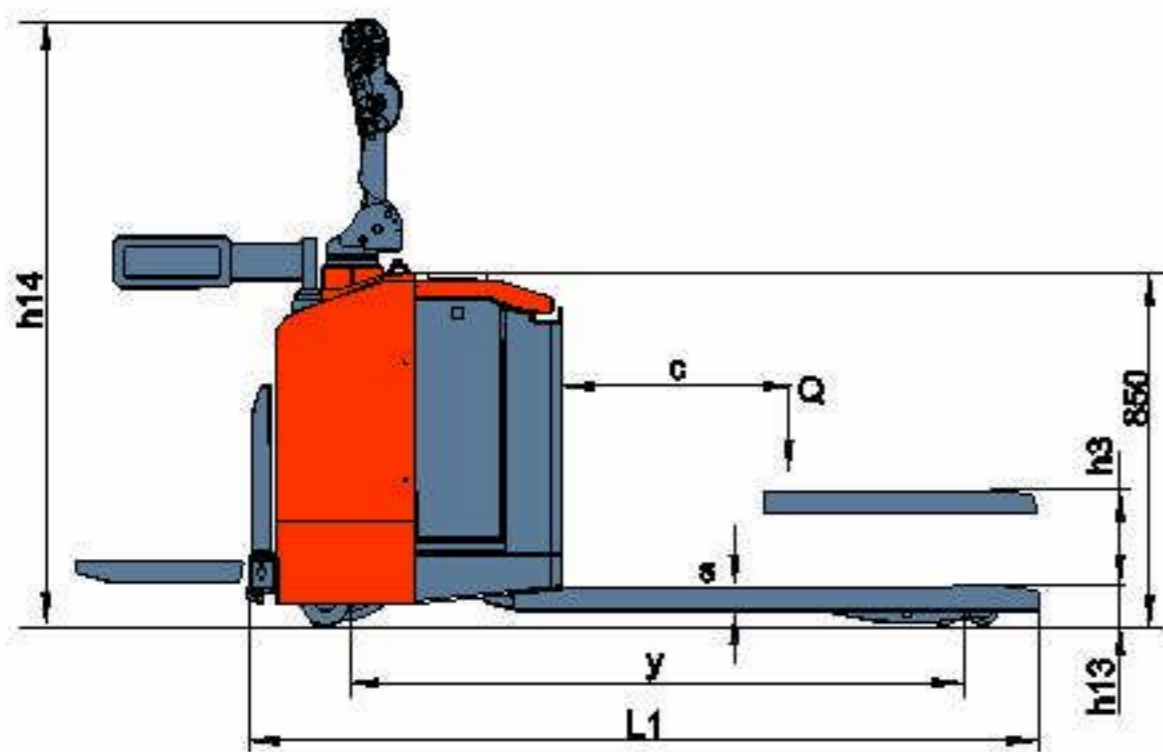
Characteristics				
1	Model Designation		CBD20	CBD20
2	Configuration Number		460	150
3	Power type		electric(battery)	
4	Operator Type		stand - on	pedestrian
5	Load capacity	Q(kg)	2000	
6	Load center	c(mm)	600	
7	Wheelbase	y(mm)	1460	1390
Wheels				
8	Tyre Type		PU	
9	Tyre Size, drive	mm	φ 248x75	
10	Tyre Size, load	mm	φ 80x80	
11	Stabilizer wheels (size)	mm	φ 115x55	
12	Wheels number,Stabilizer/load(x=driving wheels)		1X+2/4	1X+1/4
13	Tread,rear	b11 (mm)	355/385/415/500	
Dimensions				
14	Handle in neutral position	h14(mm)	1455	1385
15	Overall Length	L1 (mm)	1910/1960	1750/1800
16	Length to face of forks	L2(mm)	760	600
17	Overall Width	b1(mm)	790	720
18	Maximum Lifting height	h3(mm)	120	110
19	Height,fork lowered	h13(mm)	85	
20	Fork Thickness	s(mm)	55	
21	Fork Width	e(mm)	185	
22	Fork Length	L(mm)	1150/1200	
23	Width overall forks	b5(mm)	540/570/600/685	
24	Outside turning radius,platform up/down	Wa(mm)	1465/2140	1575
25	Right angle stacking aisle width for pallets 800×1200 mm, platform up/down(clearance: 200)	Ast(mm)	2140/2815	2235
26	Right angle stacking aisle width for pallets 1000×1200 mm, platform up/down(clearance: 200)	Ast(mm)	2225/2900	2325
Performance				
27	Travel speed,with/without load	km/h	6/6	4.5/4.5
28	Lifting speed,with/without load	mm/s	40/45	50/60
29	Lowering speed,with/without load	mm/s	35/20	50/40
30	Gradeability,with/without load	%	5/7	
31	Service Brake		Electromagnetic brake	
Motor				
32	Drive motor power	kW	AC1.5	
33	Lift motor power	kW	DC2	
34	Battery voltage/ capacity	V/ Ah	24/270	24/210
Weight				
35	Battery Weight	kg	252	190
36	Weight (Include battery)	kg	854	612



CBD20-150

HELI

**2.0 ton
CBD20
AC Electric Pallet Trucks**



ANHUI HELI CO., LTD.

ADD 15 WEST WANGJIANG ROAD, HEFEI, ANHUI, P.R. CHINA
TEL (86 551)3639068, 3639258, 3639358
FAX (86 551)3639966
WEBSITE <http://www.helichina.com>

AUTHORIZED DEALER

* Details of specifications and equipment are based on information available at the time of printing and may change without notice.